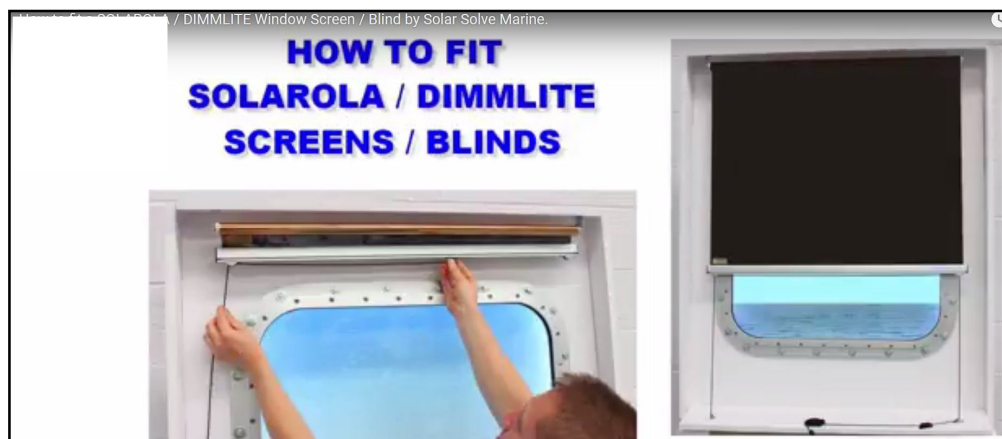


Scan here to watch our installation video or visit:  
**[solasolv.com/installation-guides](https://solasolv.com/installation-guides)**



## Component Identification

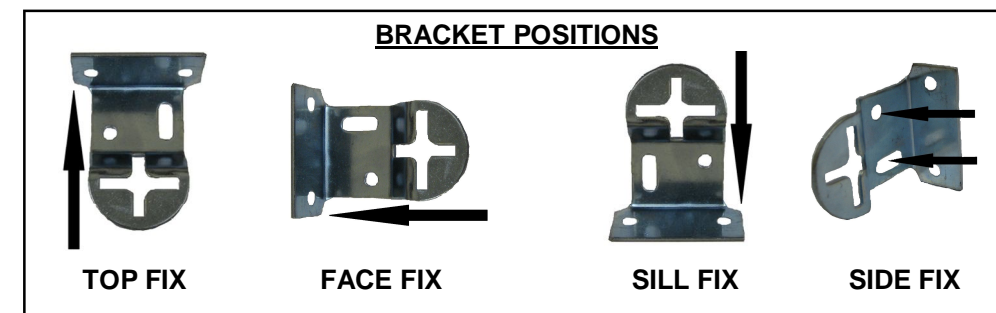
<b>Cord clamp</b> 	<b>Stainless Steel Cleat</b> 	<b>Clam Cleat</b> 
<b>Stainless Steel Pulley</b> 	<b>Acorn</b> 	<b>Cord Holder</b> 
<b>Leather Tab</b> 	<b>Turn Button</b> 	<b>Chain Safety Clip</b> 

### **\*FRAGILE-HANDLE WITH CARE\***

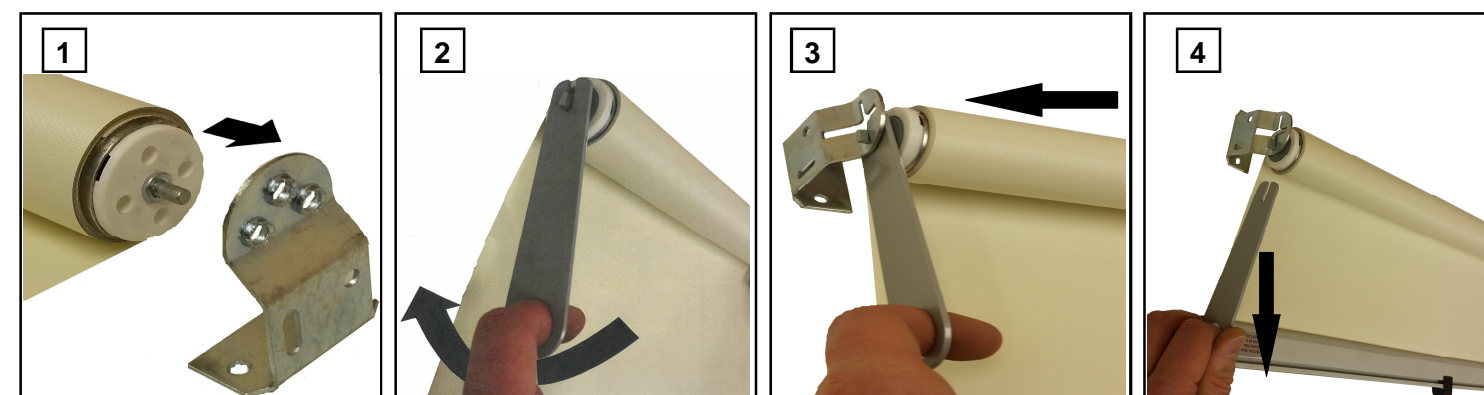
THE FILM WHICH FORMS THE SCREENS IS VERY FRAGILE AND THE UTMOST CARE SHOULD BE TAKEN WHEN FITTING THE SCREENS TO ENSURE THE FILM/FABRIC IS NOT DAMAGED. SHOULD YOU NEED TO HANDLE THE FILM/FABRIC PLEASE USE THE COTTON GLOVES PROVIDED.

### Tools Required:

Tape measure, Pencil, Drill, Drill bits (2.5mm/3.3mm), PZ1 Screwdriver, PZ2 Screwdriver, Cutters (For Cord/Cable).



### CONSTANT TENSION SPRING SCREENS



1: Locate the Pin End into its bracket.

2: Apply tension using the Tensioning Key provided (Clockwise).  
(The number of turns applied will depend upon width of the screen/blind. See the table provided.)

3: With the tension applied manoeuvre the screen/blind into the Spring End bracket (Ensure you hold the Tension in place with the key).

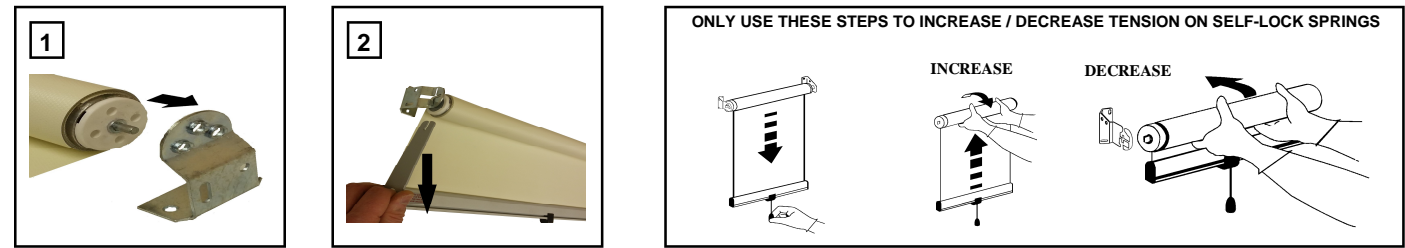
4: With the Spring End securely in place remove the Tensioning Key.

**NOTE:** For inverted screens / blinds the above instructions will also apply.

The average number of turns for each product will vary depending upon the type & weight of the fabric / film along with the drop. As a general rule we would recommend the number of turns in the table opposite.  Note that this information is a guide only, more or less tension may be required.	Up to 1000mm	8 turns
	Up to 2000mm	12 turns
	Over 2000 mm	14 turns

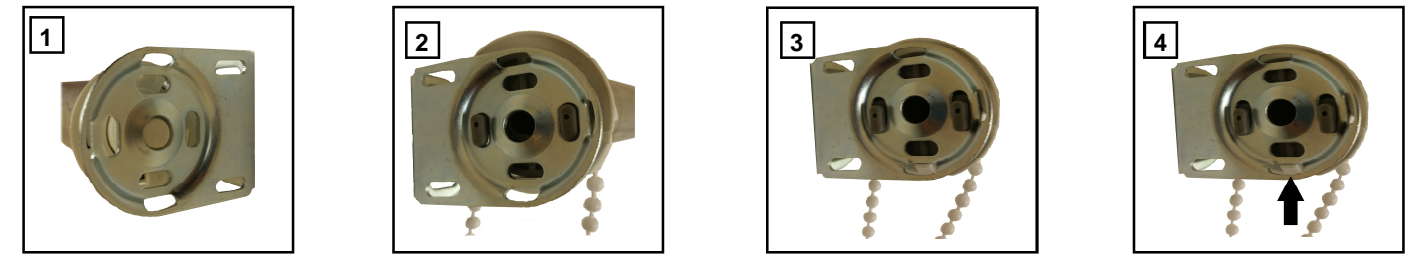
We reserve the right to make any modifications necessary to ensure products comply with a customers requirements.  
The drawings in this document are for illustration purposes only and are NOT TO SCALE.

SELF-LOCK SPRING SCREENS



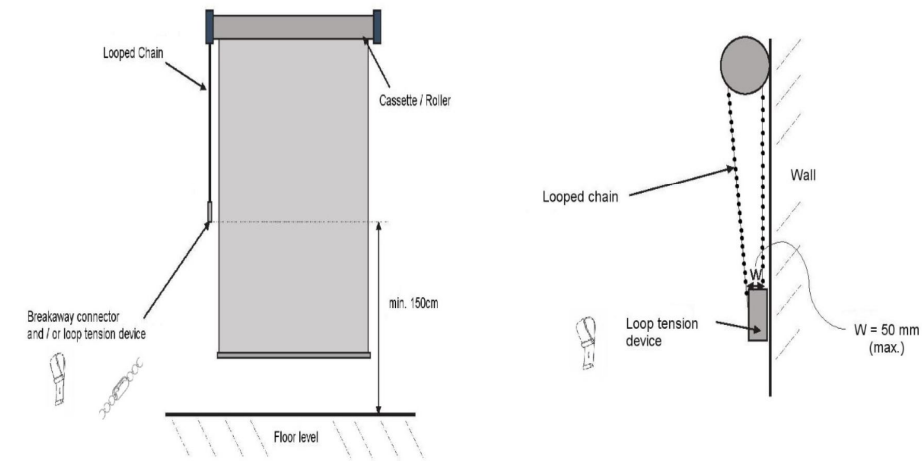
NOTE:- SELF LOCK SPRINGS CANNOT BE INSTALLED INVERTED

SIDE CHAIN CLUTCH

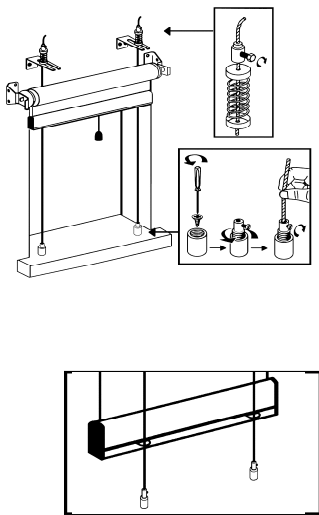


1: Locate the Pin End in to position.  
2: Locate the Clutch into the bracket.  
3: Lower the Clutch hooks into the bracket until the Clutch clicks into position.  
4: To remove the Roller Screen/Blind. You must first release the Clutch by pressing the white lip shown.  
(Damage may occur if this button is not pressed when removing the Clutch).

Safety device installation heights



CABLE SUPPORT SYSTEM



METHODS OF OPERATION

Depending upon your chosen operating system, installation will vary.  
See below for correct installation method.

UP POSITION

DOWN POSITION

DOUBLE PULLEY BOTTOM RAIL OPERATION



- Position cord clamp and pulley to ensure cord runs perpendicular.
- Position clam cleat in line with the pulley to ensure smooth operation.
- If required, cut cord to size and fit acorn.
- Position stainless cleat to tie up excess cord.

CONSTANT TENSION CENTRE PULL OPERATION



- Position pulley centrally .
- Position clam cleat in line with the pulley to ensure smooth operation.
- Attach cord to the bottom rail using the cord holder.
- If required, cut cord to size and fit acorn.
- Position stainless cleat to tie up excess cord.

SELF LOCK SPRING OPERATION



- Position stainless steel cleat centrally.
- Attach cord to the bottom rail using the cord holder.
- If required, cut cord to size and fit acorn.

SIDE CHAIN OPERATION



- Attach the chain safety clip and fix into place as shown.
- If leather tabs are used, fix turn button in line with eyelet.